

ROLLER SHAFTS

304 STAINLESS STEEL



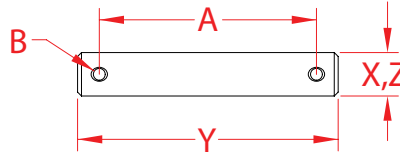
Import



Precision
Machined



Stamped



ITEM	A (diameter)	B (cotter hole)	X (height)	Y (length)	Z (width)	WT (lb)	PACKAGING TYPE	EACH (qty)	INNER (qty)	CARTON (qty)	UPC
S0278-07075	2.62"	1/8"	0.25"	3.00"	0.25"	0.05	POLYBAG	1	1	50	791506037811
S0278-07125	4.62"	1/8"	0.25"	5.00"	0.25"	0.08	POLYBAG	1	1	50	791506037828
S0278-07175	6.62"	1/8"	0.25"	7.00"	0.25"	0.11	POLYBAG	1	1	50	791506037835
S0278-08075	2.62"	1/8"	0.31"	3.00"	0.31"	0.07	POLYBAG	1	1	50	791506037842
S0278-08125	4.62"	1/8"	0.31"	5.00"	0.31"	0.12	POLYBAG	1	1	50	791506037859
S0278-08175	6.62"	1/8"	0.31"	7.00"	0.31"	0.16	POLYBAG	1	1	50	791506037866
S0278-10075	2.62"	1/8"	0.38"	3.00"	0.38"	0.10	POLYBAG	1	1	50	791506037873
S0278-10125	4.62"	1/8"	0.38"	5.00"	0.38"	0.17	POLYBAG	1	1	50	791506037880
S0278-10175	6.62"	1/8"	0.38"	7.00"	0.38"	0.23	POLYBAG	1	1	50	791506037897
S0278-13075	2.50"	1/8"	0.50"	3.00"	0.50"	0.18	POLYBAG	1	1	50	791506037903
S0278-13125	4.50"	1/8"	0.50"	5.00"	0.50"	0.29	POLYBAG	1	1	50	791506037910
S0278-13135	4.50"	1/8"	0.50"	5.38"	0.50"	0.30	POLYBAG	1	1	50	791506037927
S0278-13160	5.50"	1/8"	0.50"	6.38"	0.50"	0.36	POLYBAG	1	1	50	791506037934
S0278-13175	6.50"	1/8"	0.50"	7.00"	0.50"	0.40	POLYBAG	1	1	50	791506037941
S0278-16075	2.38"	3/16"	0.63"	3.00"	0.63"	0.27	POLYBAG	1	1	50	791506037958
S0278-16125	4.38"	3/16"	0.63"	5.00"	0.63"	0.45	POLYBAG	1	1	50	791506037965
S0278-16135	4.50"	1/8"	0.63"	5.38"	0.63"	0.48	POLYBAG	1	1	50	791506037972
S0278-16160	5.50"	1/8"	0.63"	6.38"	0.63"	0.57	POLYBAG	1	1	50	791506037989
S0278-16175	6.38"	3/16"	0.63"	7.00"	0.63"	0.62	POLYBAG	1	1	50	791506037996
S0278-16240	8.50"	1/8"	0.63"	9.38"	0.63"	0.82	POLYBAG	1	1	25	791506038009
S0278-16290	10.50"	1/8"	0.63"	11.38"	0.63"	1.01	POLYBAG	1	1	25	791506038016
S0278-16340	12.50"	1/8"	0.63"	13.38"	0.63"	1.16	POLYBAG	1	1	25	791506038023
S0278-20075	2.25"	3/16"	0.75"	3.00"	0.75"	0.39	POLYBAG	1	1	50	791506038030
S0278-20125	4.25"	3/16"	0.75"	5.00"	0.75"	0.64	POLYBAG	1	1	50	791506038047
S0278-20175	6.25"	3/16"	0.75"	7.00"	0.75"	0.89	POLYBAG	1	1	25	791506038054
S0278-25075	2.00"	1/4"	1.00"	3.00"	1.00"	0.67	POLYBAG	1	1	25	791506038061
S0278-25125	4.00"	1/4"	1.00"	5.00"	1.00"	1.12	POLYBAG	1	1	50	791506038078
S0278-25175	6.00"	1/4"	1.00"	7.00"	1.00"	1.57	POLYBAG	1	1	20	791506038085

NOTE:
DRILLED AT BOTH ENDS TO ACCEPT PROVIDED 1/8" COTTER PINS OR USE WITH PALL NUTS.
ALL DIMENSIONS ARE NOMINAL (+/- 3%) AND ARE SUBJECT TO CHANGE WITHOUT NOTICE.